



- 1
- 2
- 3
- 4
- 5
- 6
- 7
- 8
- 9
- 10
- 11
- 12
- 13
- 14
- 15
- 16
- 17
- 18
- 19

**MATERIAL**

High-resilience polypropylene based (PP) technopolymer, RAL 7024 grey colour, matte finish.

**BASES WITHOUT NO-SLIP DISK**

- **LS.A-PP**: base without ground mounting.
- **LV.F-PP**: base with two holes at 180° for ground mounting, supplied covered by a diaphragm (which can be easily removed by a metal tool) to avoid all unhealthy deposits of dirt and dust when the ground mounting is not required (see Fig.1).

**BASES WITH NO-SLIP DISK ASSEMBLED**

- EPDM rubber no-slip disk, hardness 70 Shore A.
- **LS.A-PP-AS**: base without ground mounting.
- **LV.F-PP-AS**: base with two holes at 180° for ground mounting, supplied covered by a diaphragm (which can be easily removed by a metal tool) to avoid all unhealthy deposits of dirt and dust when the ground mounting is not required (see Fig.1).

**FEATURES AND APPLICATIONS**

Polypropylene bases are particularly suitable for those sectors where they can be in contact with chemical agents and/or for frequent washing with acidic or basic detergent solutions, such as in the chemical, process, pharmaceutical, food, textile and paper industry. The particular assembling system of the no-slip disk to the base assures a perfect anchoring, preventing separation even in case of impact during transport or of adhesion (sticking) to the floor (see No-slip Disks on page 1137).

**NOTE**

To choose the stem see "Tables of the possible combinations Bases/Stems"(on page 839).



ELESA Original design

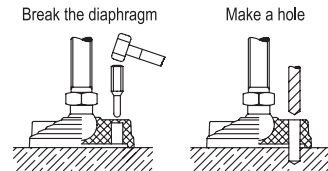
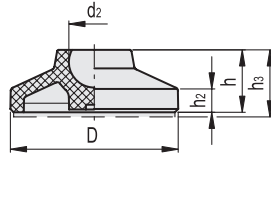


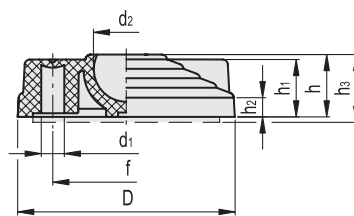
Fig.1

Conversion Table	
1 mm = 0.039 inch	
▼	
mm	inch
40	1.57
50	1.97
60	2.36
80	3.15
100	3.94

**LS.A-PP  
LS.A-PP-AS**



**LV.F-PP  
LV.F-PP-AS**



**BASE LS.A-PP**

**BASE LS.A-PP-AS**

Code	Description	Code	Description	D	d2	h	h2	h3#	[N]*	[N]**	△△	△△#
370131	LS.A-40-PP-14	370231	LS.A-40-PP-14-AS	40	14	17	5.5	20	2000	10000	13	20
370135	LS.A-50-PP-14	370235	LS.A-50-PP-14-AS	50	14	19	6.5	22	2100	12000	19	31
370141	LS.A-60-PP-14	370241	LS.A-60-PP-14-AS	60	14	24	8.5	27	2300	13500	25	42

**BASE LV.F-PP**

**BASE LV.F-PP-AS**

Code	Description	Code	Description	D	d1	d2	h	h1	h2	h3#	f	Ground mounting	[N]*	[N]**	△△	△△#
390332	LV.F-80-PP-24	390832	LV.F-80-PP-24-AS	80	8.5	24	24	23	9	27	54	•	4000	18000	79	75
390342	LV.F-100-PP-24	390842	LV.F-100-PP-24-AS	100	12.5	24	24	23	9	27	70	•	5000	18500	85	139

\* Max static load: is the value above which the load applied to the element may cause some plastic material breakage, in particular conditions of use. Obviously, a factor that takes into consideration the importance and the safety level of the specific application must be applied to this value.

\*\* Load at breakage: is the value above which the load applied to the element may quickly cause some plastic material breakage, in particular conditions of use.

# Data with no-slip disk mounted.